

# Training

Installing essCore\_ir and data server

# Introduction

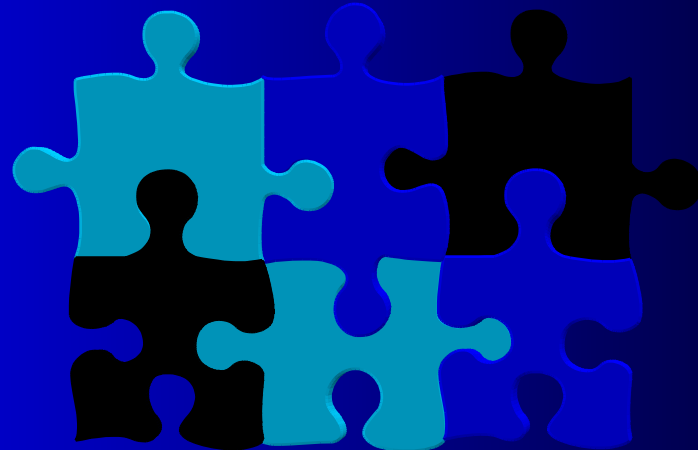
- essCore is a client server application that needs to be setup correctly or it will not run.
- This presentation will walk you through the steps you will need to go through as you setup your system.
- It might look like hard, but it isn't

# Agenda

- The Installer Process
- Making sure SQL server was installed and running
- Running the essCore wizard – setting up a new database

# Overview

- We will Cover everything you need to know about setting up and configuring your system the way you want it.



# Vocabulary

- essCore – the Client application and databases it creates
- Data server/ SQL Server – the database server that is just a running application (not a computer)
- Client – the application that runs when you click on the icon or from the list of programs found on your computer.
- Installer – the setup from your CD or the file that you downloaded.
- essCore wizard – the step through wizard to help you get started when you first run the program.

# The Installation from the CD or program you downloaded

- The installer only installs the files you will need to run essCore and the data server.
- Toward the end of the install, you will be asked if you want to install SQL Server or the Data Server. If you have never used essCore or do not have SQL Server, or want to create a new data server instance (the same data server loaded twice) you **MUST** choose “yes”. If you already have an essCore data base created, you may choose “no”.

# SQL Server Install

- You will be asked to enter a password for the DATA SERVER. The default password is “Core”. If you change this password, make sure you write the password down!
- When the SQL Server Installer begins, it will ask you if you want to install SQL Server. Choose “yes”
- Another message box will pop up under and sometime over the SQL Server installer. Do not click this box until the SQL Server Install is complete.

# SQL Server Manager

- After clicking the message box, the SQL Server Service Manager will open.
- If it does not automatically pop up after you have click the message box's OK button, you will need to go to trouble shooting.
- The Service Manager should show the name of the data server (yourcomputer\coreldb)
- You should make sure that each of the services are running. If they are not, click on the green arrow button to run them.
- Make sure you click the check box at the bottom for each service that says "Auto-start Service When OS starts"
- Click box at the top right with the X in it to close the service manager. It will show as an Icon on your task bar, by the time at the bottom right of your screen.
- At the end of the install, a new window will pop up called SQL SERVER CLIENT NETWORK UTILITY – Make sure 'Named Pipes and TCP/IP' are enabled and that 'Named Pipes is at the top of the list on the left side'

# Setting Up Core

- You are now ready to begin setting up essCore\_ir.
- Double click the Icon found your desktop call “TennSoft essCore\_ir”
- The wizard will now walk you through the steps of getting connected to a data base.
- NOTE: the difference between the data server and the data bases is that there is one server that contains many data bases.

# essCore Wizard

- When the wizard begins, choose Next
- Click the Set Database Connection button in the middle of the window.
- Click the “Connect to Database”

# Creating a New Database

- The System will try to connect to an existing database. Since there has not been one created yet, it will give you a message that says “Unable to connect to selected server...” Click OK.
- Click on drop down box that next to “Server”.
- Find your data server in the drop down. If you don’t see it there, go to “how to connect by named pipes at the end of this presentation”
- Click on the “new” option button at the top.
- Enter a name for your new database.
- Click OK
- A new window pops up. Check to make sure the name of the database is correct and then click “Create Database”

# Creating Database Process

- A window will pop up asking for the data server's administrative user. This should be "sa" for the installation of a essCore server instance. Click OK.
- Enter the password that you wrote down when SQL Server was being installed from the installer. The default was "Core". NOTE: The password is case sensitive.
- If all is correct, the program will ask you if you are installing an Server type OS. Click Yes or NO depending on the windows operating system you are running.
- Once the process is complete, a popup will tell you so and you can click "close" on the CREATE DATABASE window.

# Logging into essCore

- You will now be prompted to log into essCore\_ir. This should not be confused with logging into the Data Server. The default User Name for all new databases is “Administrator”
- The Password for the Administrator is “Admin”. This password is case sensitive.
- Once you log in, you are now ready to set up your system.

# Finish the Wizard

- The wizard will pop up after you have closed “the tip of the day” window.
- The Employees interface will appear. You may enter employees or choose “Cancel” and then “Close”
- You may then click next through the wizard until it is finished.

# Summary

- essCore is now ready for you to configure and add data the way you want your business to run
- Questions or problems, call customer service at 615-957-0546 or e-mail at [service@tennsoft.com](mailto:service@tennsoft.com)

# Trouble Shooting

- For trouble shooting questions or feedback check our bulletin board at <http://www.tennsoft.com/bb/forum> or post a message.